



**185C NORTHCHURCH ROAD**  
LONDON, N1 3NT

**£5,750 PER MONTH**

A beautifully designed three/four-bedroom house, spread across four bright and spacious floors in the heart of Islington.

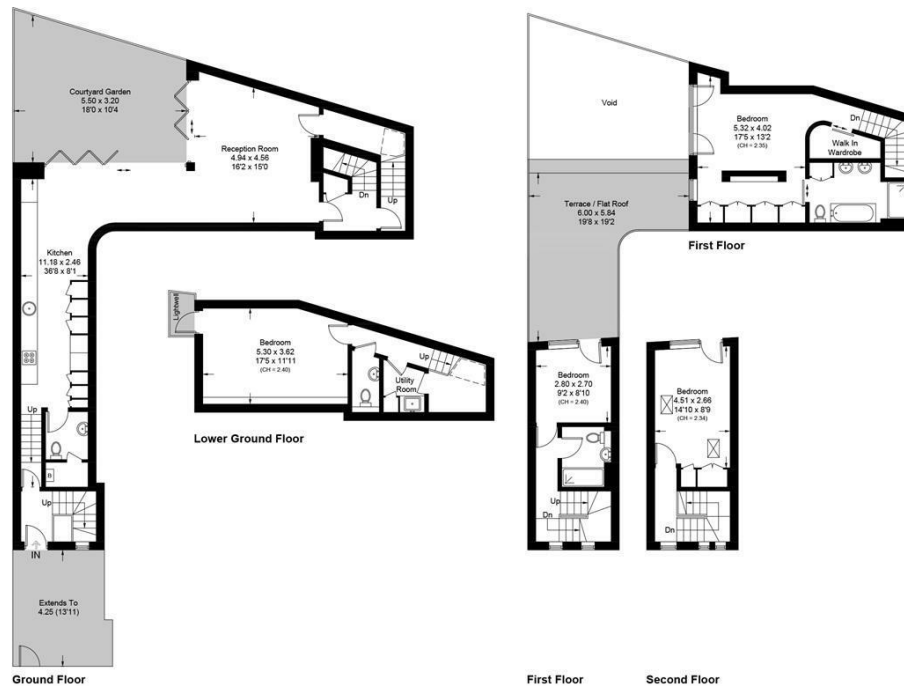
As you step inside, you'll be greeted by a stunning open-plan kitchen and dining area. The kitchen is fully equipped with high-end appliances, plenty of storage, and a sleek design. The adjoining dining space opens onto a private patio.

The property boasts 3/4 generously sized bedrooms, including a master suite with its own en-suite bathroom and ample wardrobe space. The additional bedrooms are bright and airy, ideal for family, guests, or even a home office or cinema. A cosy yet stylish living room offers the perfect spot to relax after a long day, with large windows flooding the space with natural light.

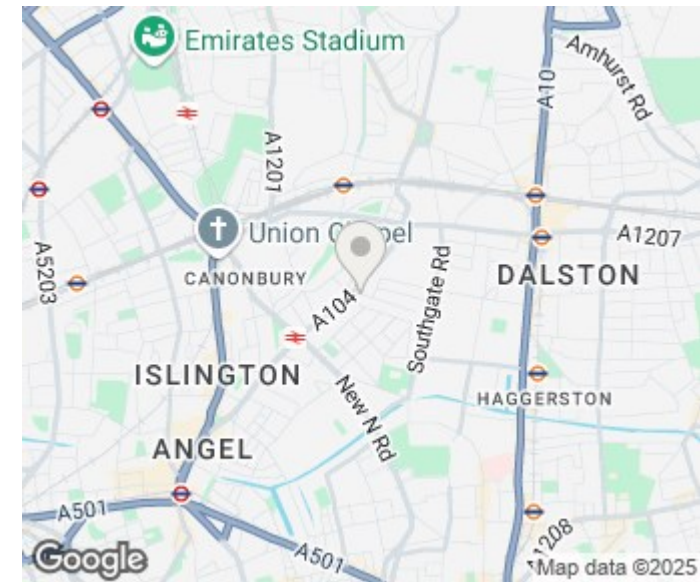
**NH** **NobleHouse**  
services

## Northchurch Road, N1

Approximate Area = 182.5 sq m / 1964 sq ft  
Including Limited Use Area (1.7 sq m / 18 sq ft)



Surveyed and drawn in accordance with the International property measurements standards (IPMS 2: Residential) Not drawn to scale unless stated.  
Whilst every care is taken in the preparation of this plan, please check all dimensions, shapes and compass bearings before making any decisions reliant upon them.



Energy Efficiency Rating		
	Current	Potential
Very energy efficient - lower running costs		
(92 plus) A		93
(81-91) B	87	
(69-80) C		
(55-68) D		
(39-54) E		
(21-38) F		
(1-20) G		
Not energy efficient - higher running costs		
England & Wales	EU Directive 2002/91/EC	

Agents Note: Whilst every care has been taken to prepare these particulars, they are for guidance purposes only. All measurements are approximate and are for general guidance purposes only and whilst every care has been taken to ensure their accuracy, they should not be relied upon and potential buyers/tenants are advised to recheck the measurements

Noble House Services - Lettings  
5 Paper Mill Buildings, City Garden Row,  
Islington  
London  
N1 8DW

02076 891000  
enquiries@nh-services.co.uk  
www.nh-services.co.uk

**NH** NobleHouse  
services